

The image shows an outdoor terrace area of a hotel. In the foreground, there are several round black metal tables with matching chairs. Each table is set with a large, colorful bouquet of flowers and a small lit candle in a glass holder. The terrace is paved with light-colored stone tiles. In the background, there is a building with large windows and brickwork. The area is lush with greenery, including trees and various plants, some of which are illuminated with warm lights. The overall atmosphere is elegant and inviting.

STARHOTELS®  
PREMIUM

Business Palace  
MILANO



# Business Palace

MILANO

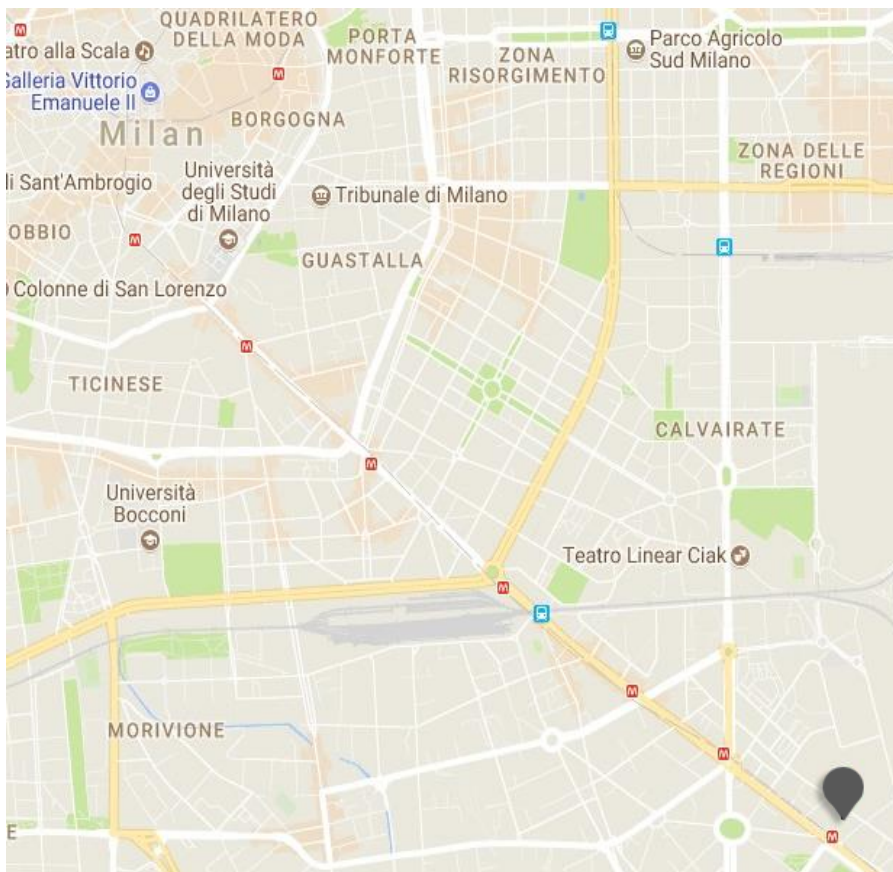


## *From industrial icon to modern-day hospitality*

An icon of industry transformed into a landmark of luxury. The Business Palace is set inside a converted early 1900s factory and its spacious rooms are perfectly suited to large events and conferences. As its name suggests, the hotel is a favorite with business travelers thanks to its excellent transport links, flexible meeting spaces and quiet rooms. It also excels when it comes to relaxation, with a renowned restaurant and fitness room with panoramic views across Milano.

# Business Palace

MILANO



## Location

Located in the business area in the East of Milan, a few metro stop away from the city centre, a few minutes from Linate airport and close to the highways

## Distances

**Milano Centrale railway station:** Km 10 (15 min. by Underground)

**Rogoredo railway station:** Km 0,8

**P.zza Duomo:** (10 min. by Underground)

**Highway:** Km 0,5

**Underground:** MM3 Porto di Mare

**Airport:**

Linate Km 7,2 - Malpensa Km 45

**Fairgrounds:**

Milano (City) Km 8 - Milano (Rho) Km 20

Via Gaggia, 3 - 20139 Milano - ITALY

T +39 02 535451 F +39 02 57307550

[business.mi@starhotels.it](mailto:business.mi@starhotels.it)

[starhotels.com](http://starhotels.com)



# Business Palace

MILANO

## Restaurant & Bar

Italian cuisine that distinguishes itself in the details is celebrated at Il Borromeo by Eatly restaurant. Attention to details, carefully selected ingredients and beautifully presented food with perfectly balanced colors that tantalize your taste buds with regional cuisine that is as old as it is contemporary.

La Corte by Eatly bar is a wonderful spot to relax with a coffee and paper, or perhaps enjoy an aperitif before lunch or dinner.



# Business Palace

MILANO



## 255 Rooms

- 48 Classic
- 118 Superior
- 50 Executive
- 6 Junior Suite
- 33 Suite

Elegant and comfortable with hi-tech details, our 255 rooms and suites create a home-away-from-home for business and leisure travelers alike.





# Business Palace

MILANO



## Meetings & Events

**Meeting rooms: 10**

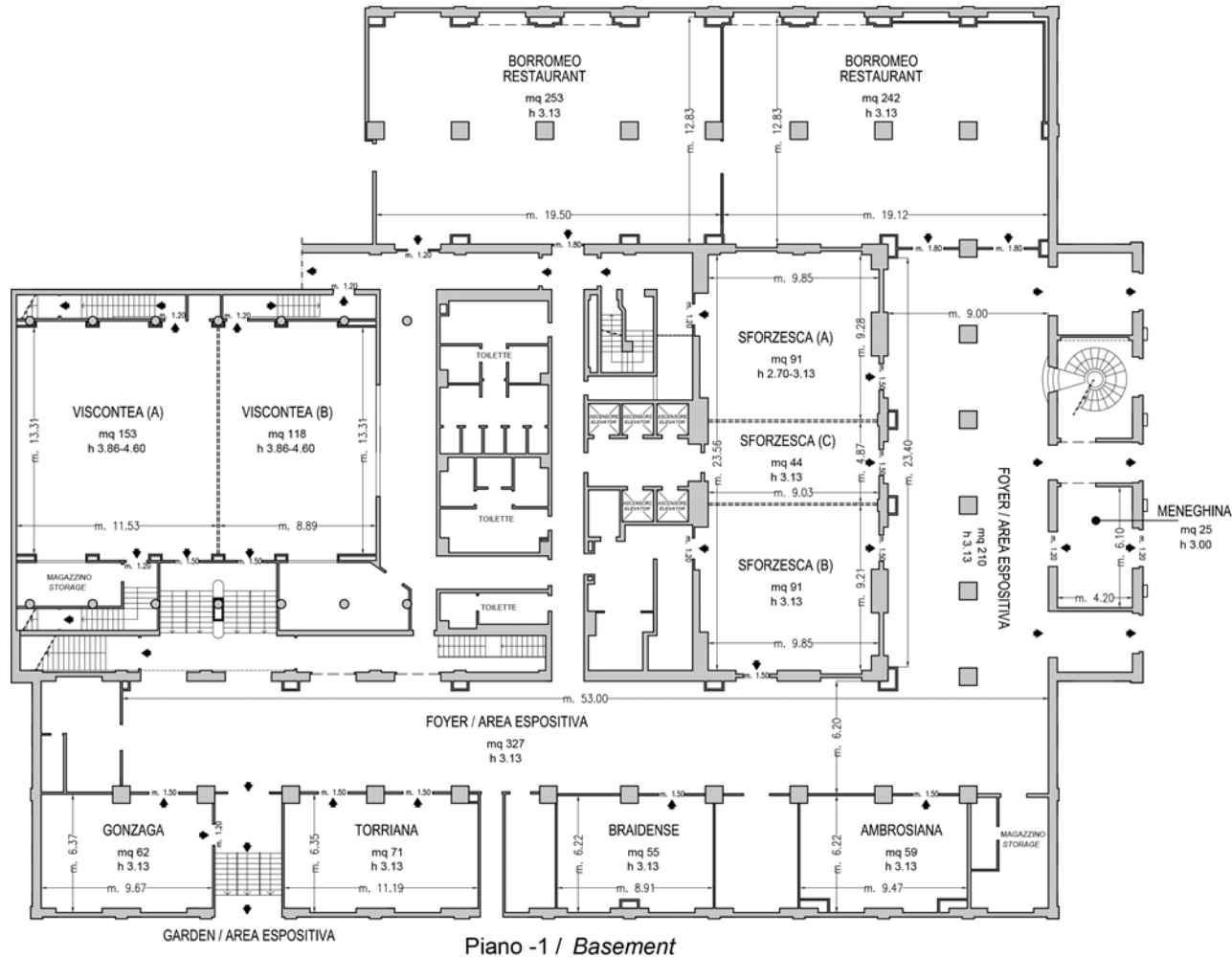
**Capacity (theatre style): 340 max**

Our 10 outstanding meeting rooms for up to 340 people and an experienced Events Manager will help deliver your event with style. The Business Palace offers exhibition spaces even outdoors.



# Business Palace

MILANO



► Uscite di sicurezza / Emergency Exits

- - - Finestre / Windows

==== Paredi mobili / Modular Walls

■ Colonne / Columns

# Business Palace

MILANO

Meeting rooms	Area mq / ft	L x W mt. / ft.	Height mt. / ft.	Theatre	Class room	Conference table/ U-shape	Cabaret style^	Cocktail reception	Banquet
Viscontea (A)	153 1646,28	13,31x11,53 43,67x37,83	3,86-4,60 12,66-15,09	150	100	38	100	120	-
Viscontea (B)	118 1269,68	13,31x8,89 43,67x29,17	3,86-4,60 12,66-15,09	100	60	35	80	80	-
Viscontea (A+B)	273 2937,48	20,49x13,31 67,22x43,67	3,86-4,60 12,66-15,09	340	160	55	170	200	160
Sforzesca (A)	91 979,16	9,85x9,28 32,32x30,45	2,7-3,13 8,86-10,27	80	42	27	60	60	-
Sforzesca (B)	91 979,16	9,85x9,21 32,32x30,22	3,13 10,27	80	42	27	60	60	-
Sforzesca (C)	44 473,44	9,03x4,87 29,63x15,98	3,13 10,27	34	24	12	20	20	-
Sforzesca (A+C)	135 1453,2	9,85x14,18 32,32x46,52	3,13 10,27	110	65	35	80	90	-
Sforzesca (B+C)	135 1453,2	9,85x14,18 32,32x46,52	3,13 10,27	110	65	35	80	90	-
Sforzesca (A+B+C)	232 2496,32	9,85x23,56 32,32x77,30	3,13 10,27	220	120	40	140	160	120
Torriana	71 763,96	6,35x11,19 20,83x36,71	3,13 10,27	70	35	25	40	40	16
Gonzaga	62 667,12	6,37x9,67 20,90x31,73	3,13 10,27	55	30	25	30	40	16
Ambrosiana	59 634,84	6,22x9,47 20,41x31,07	3,13 10,27	45	30	22	30	20	8
Braidense	55 591,8	6,22x8,91 20,41x29,23	3,13 10,27	45	30	20	30	20	8
Meneghina	26 279,9	4,20x6,16 13,64x20,20	3 9,64	10	-	14	-	-	-
Studios°	20-25 215,20-269	5,38x3,70 17,65x12,14	2,70 8,86	20	-	-	-	-	-
Foyer sforzesco	207 2228,13	9x23 29,53x75,46	3,13 10,27	-	-	-	-	160	-
Foyer visconteo	264 2841,67	6x44 19,69x144,36	3,13 10,27	-	-	-	-	300	-
Garden	415 4467	36,4x11,4 119,4x37,4	-	-	-	-	-	-	-
Tensostruttura	70 753,48	12,4x5,7 40,6x18,7	-	-	-	-	-	-	-
Il Borromeo by Eataly Restaurant	495 5328,14	12,83x38,26 42x125,5	3,13 10,27	-	-	-	-	340	300
Lobby bar	180 1937,5	12,63x14,30 41,44x46,9	3,13 10,27	-	-	-	-	120	80

° Luce naturale/ Daylight

^ Class room: tavoli da 3 persone, tables up to 3 pax each ^ Conference table/Utable: tavoli da 3 persone, tables up to 3 pax each ^ Cabaret style: tavoli da 7 persone, tables up to 7 pax each